

PURPOSE_

The purpose of this 'Working Draft' Spatial Framework summary is to facilitate additional public and stakeholder feedback following the public meetings and reference group workshops held in November and December 2016.

Additional commentary and feedback will be sought between now and Friday 27th January 2017. Feedback will be incorporated into the 'Final' Spatial Framework which is scheduled for completion in early 2017.

Please provide feedback/responses to;
portrevitalisation@whanganui.govt.govt.nz

VISION_

WHERE CREATIVITY, COMMERCE, EDUCATION AND RECREATION ARE WOVEN TOGETHER TO CREATE AN AUTHENTIC AND MEMORABLE DESTINATION THAT BUILDS ON THE MARITIME TRADITIONS, ECONOMIC VITALITY AND SENSE OF PLACE OF WHANGANUI AND ITS RIVER



COLLABORATIVE

A place-based, design led and collaborative process. The creation of a new waterfront destination, that prioritises people through employment, recreation and access to the water.



SUCCESSFUL

Use the port and its resources to generate economic and financial opportunity for Whanganui and its people. Support creativity, innovation and enterprise, use the marine industry as a catalyst for change.



BLUE + GREEN

Celebrate the landscape, iwi, cultural and historical interaction of land (whenua) and sea (moana) in this place. Stitch land and sea together, creating new opportunities to engage with and occupy the port and river.



PUBLIC

Prioritise public access to the waters edge via a continuous waters edge promenade. Create new open spaces on wharves and on land. Provide for a wide range of recreational opportunities



SUSTAINABLE

Use landscape to remediate and restore the landscape of the Port Basin. Adopt, where appropriate, best practice environmental principles, improve the quality of the river/port environment.



AUTHENTIC

Reveal and reinforce landscape and cultural narratives and marine activity. Use the existing wharf and sheds as catalysts for identity and transformation. Re-establish connections to and tell the stories of Castlecliff, the city and river.



COMPLEMENTARY

Support the wider economic, social and recreational aspirations of the Whanganui region. Complement and support the City Centre, Castlecliff and the River.



MIXED USE

Curate synergies between different uses and activities, a truly mixed-use precinct that supports visitation, productivity, recreation and social interaction.



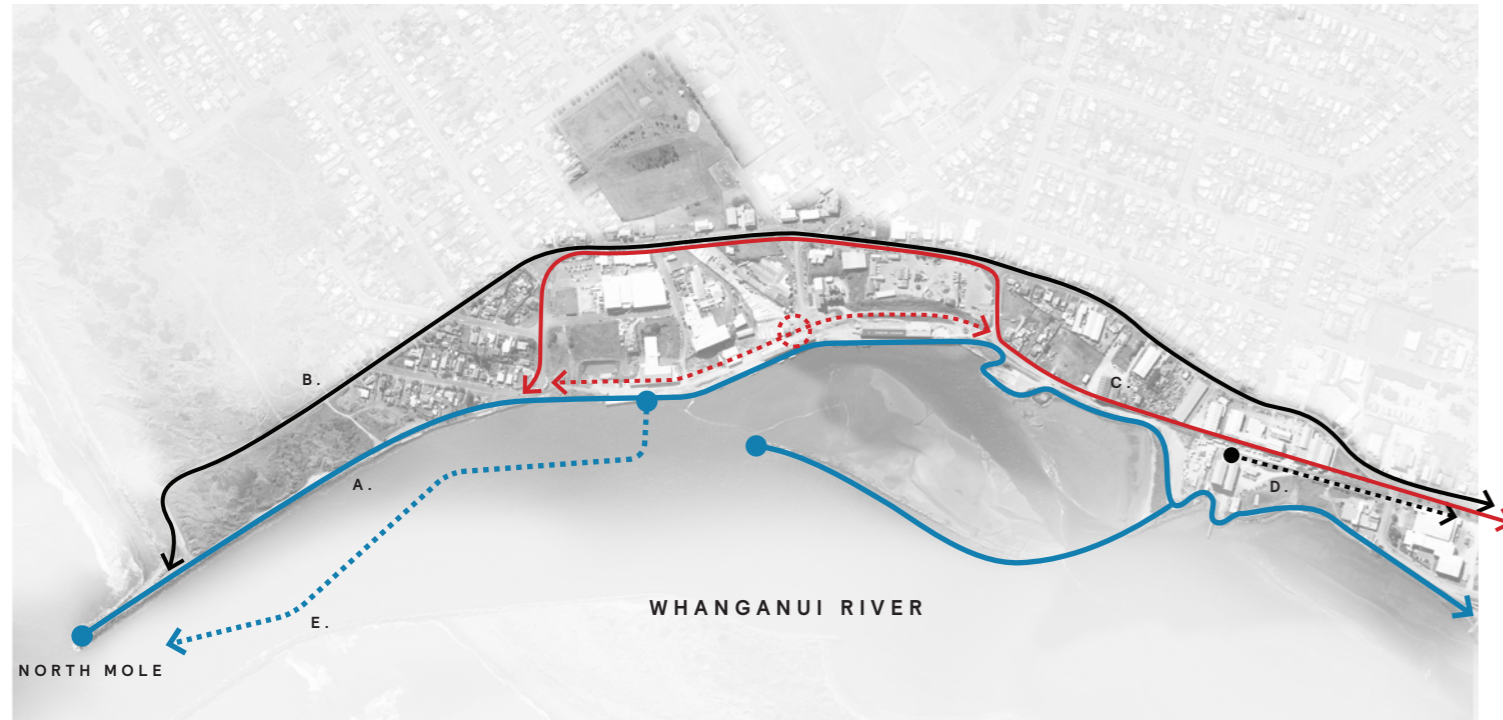
CURATED

Manage and curate the port as a 'place' with a co-ordinated program of strategic activation and place making which re-establishes the port as a place for people and community.

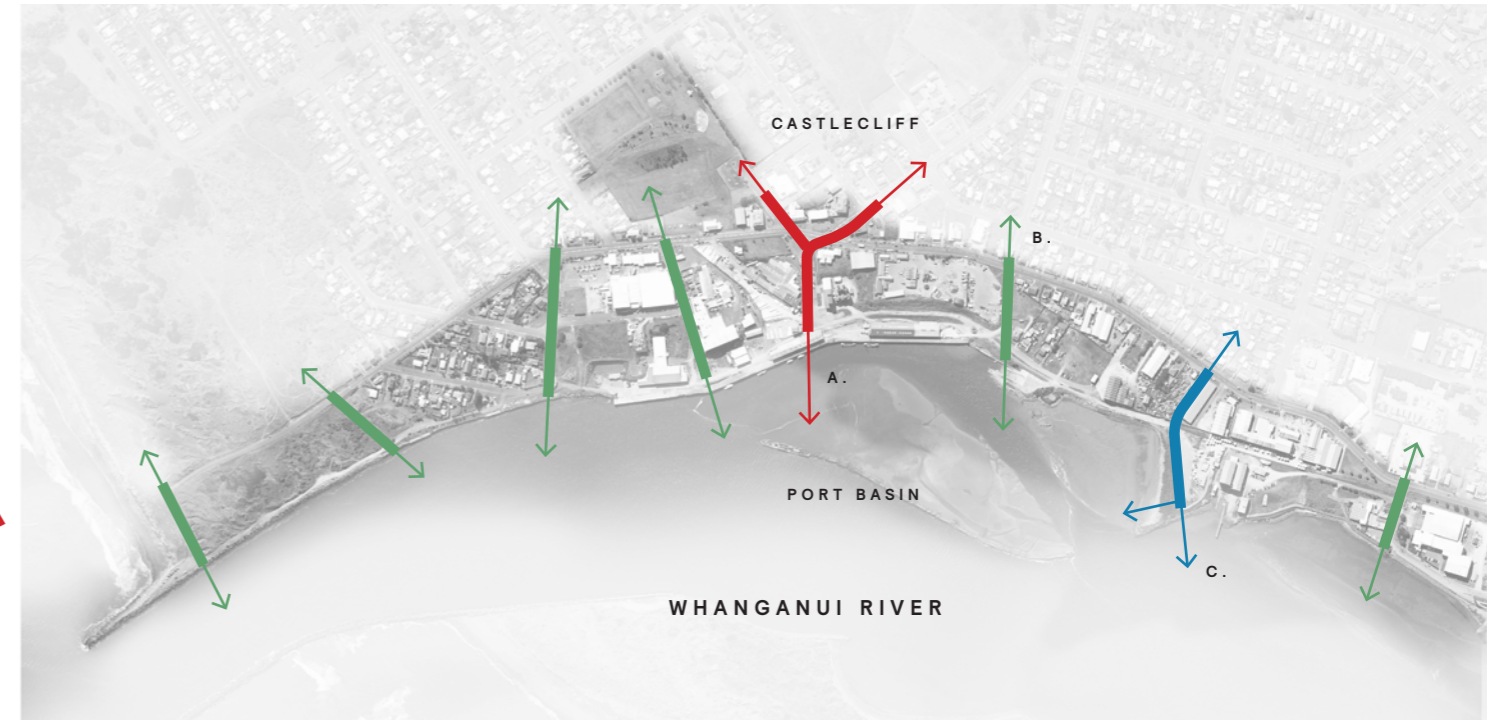


FLEXIBLE

A 'loose fit' strategy able to adapt to changes over time, Create flexible spaces and activities responsive to changing uses and supportive of phased implementation.



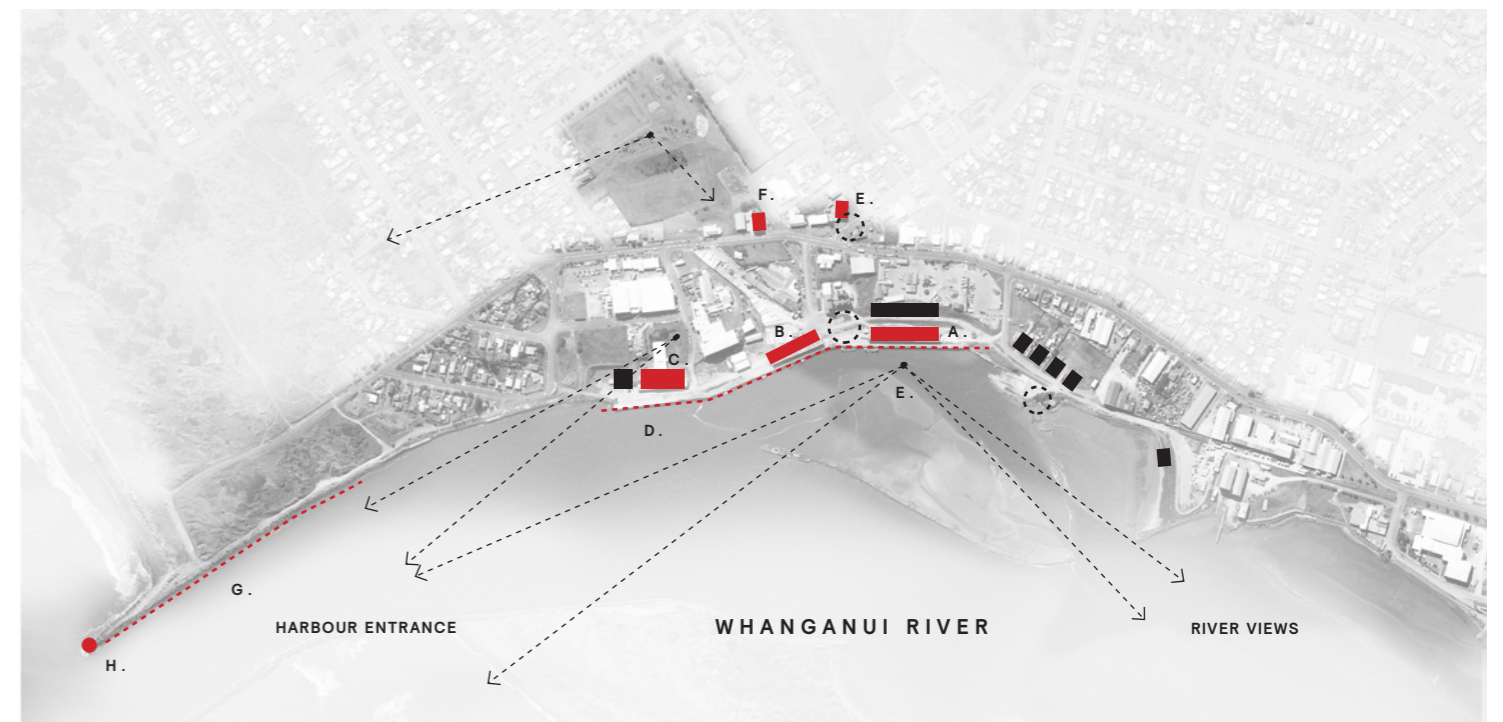
001 RIVER, RAIL AND ROAD CONNECTIONS Utilise existing and historical transport and infrastructure connections to reinforce the Port as a highly connected and accessible destination. **A.** Create a new waters edge walking and cycling route between the City centre and North Mole. **B.** Enhance Heads Road as the city's primary 'city to sea' urban avenue. **C.** Accommodate the 'mountains to sea' cycle path both through and around the Precinct. **D.** Utilise access to the existing rail line, infrastructure and regional network. **E.** Optimise the Port function and water based connections.



002 CITY TO SEA STITCHES **A.** Reveal the historical relationship between Castlecliff and the Basin and River as the key connection between the Port and the city. Re-establish the relationship between the Town Centre and public activity on the wharves. **B.** Reinforce the 'City to River stitch' by improving sight lines and connections between Heads Road and the River. **C.** Create a new access that enables existing and proposed recreational activities.



003 REINSTATE THE PORT BASIN Recreating the Port Basin unlocks the working and recreational potential of the port. This is achieved by: **A.** Dredging the basin to enable deep water access adjacent the wharf edges and a fully wet basin at all tides for recreational activity. **B.** Reinstating river training wall to separate the basin from the River. **C.** Use the material from the dredging to reclaim new public park that supports recreational activity. **D.** Reinstating North Mole as an important regional destination and landmark for the port.



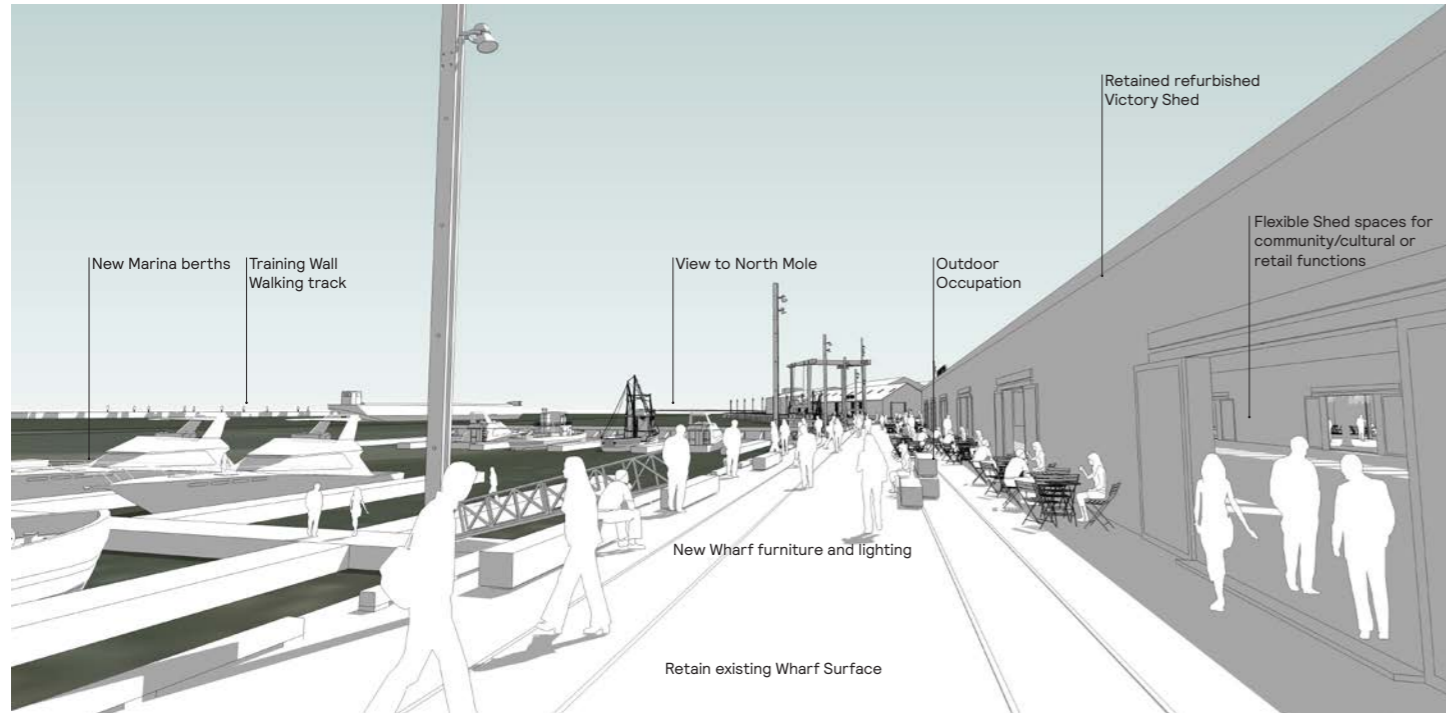
004 HERITAGE AS A CATALYST Use existing heritage and character features to build identity and seed activity. **A.** Adaptive re-use of the Victory Shed creates a new public waterfront destination. **B.** Heritage timber shed re-used as a waterfront destination. **C.** Coolstore Building retained and re-used as a working waterfront facility. **D.** Public access to the wharf edge is retained and enhanced. **E.** Links to Castlecliff are reinforced. **F.** Old fire station. **G.** Mole structure refurbished. **H.** North Mole refurbished. **E.** Visual connections up and down the river are revealed from key vantage points.



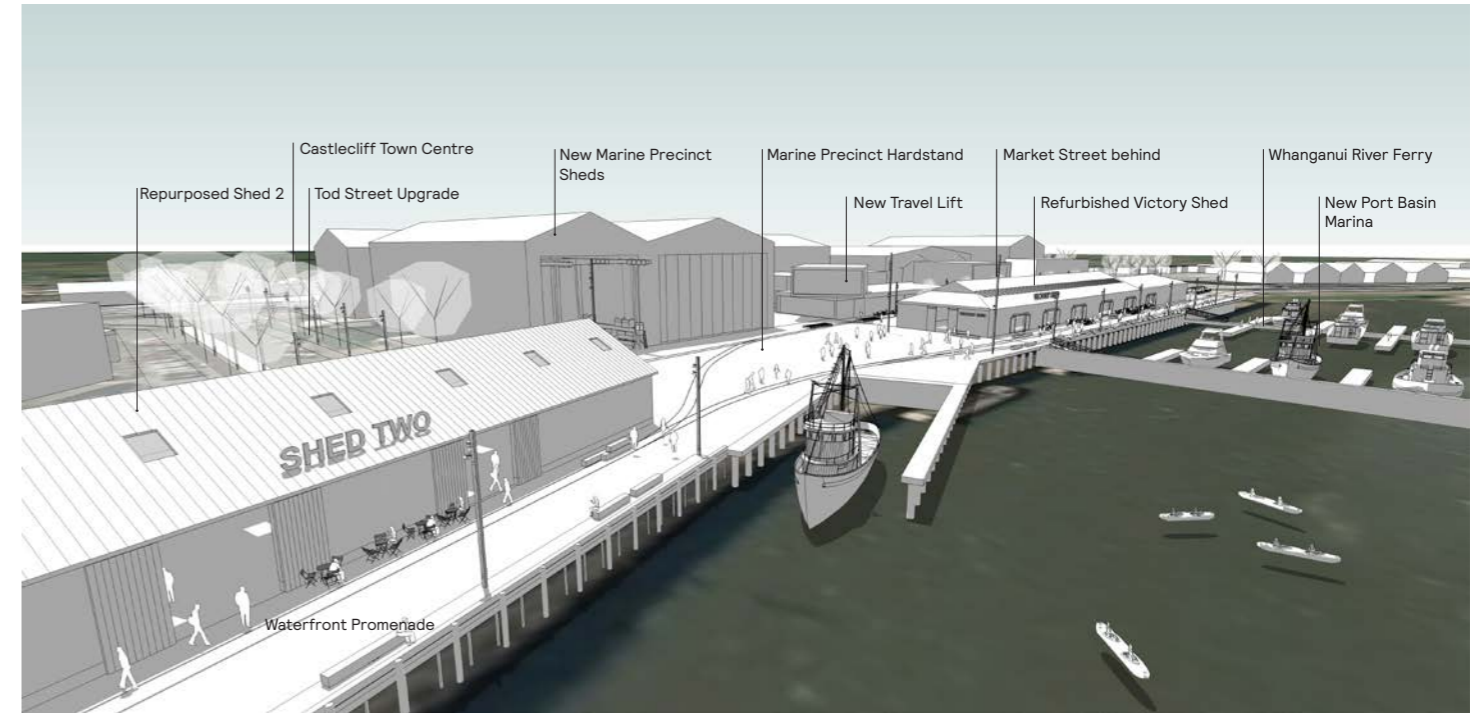


PLAN KEY

- | | | | | | |
|--|---|---|--|--|--|
| <p>01 Heads Road enhanced over time as a 'city to sea' Avenue and key access route to the Port/ water front</p> <p>02 Establish a continuous river/ water's edge walk/ cycle way between the city and North Mole activated with art and interpretive items.</p> <p>03 Establish a new hub/storage facility around the existing rail terminus. Integrate former Q West site.</p> <p>04 Enhance existing streets to frame views, as green connections and 'city to sea' stitches.</p> <p>05 Reinforce the historical connectivity between Castlecliff and the waters edge/wharves via Tod</p> | <p>06 Road.</p> <p>07 New access from Heads Road (location TBC) to support recreation zone.</p> <p>08 New Reclaimed Park utilising material dredged from Port Basin (size and design TBC via further design and consultation) Reinstated training wall to enclose Basin. Optimise use of the Basin for recreational use - waka ama, paddle board, sailing, swimming etc.</p> <p>09 Boat ramp upgraded to support recreational access and use. Future launch pontoons to be added.</p> <p>10 Establish a Community Facilities/Club cluster with</p> | <p>11 potential shared use of facilities and buildings.</p> <p>12 New Marina berths and swell attenuation for boat ramp.</p> <p>13 Retain existing Victory Shed as a community destination with a mix of uses and public access to Wharf 3. Retain Shed 2 as a working wharf shed with potential marine and/or fishing/ seafood tenant. Retain existing Coolstore building to support Marine Industry activity.</p> <p>14 Q-West Boatbuilders relocated from existing site.</p> <p>15 Retain historic lookout point and green space.</p> <p>16 Flexible hard-stand plaza and travel lift bay.</p> | <p>17 Stage 1 extent shown dashed.</p> <p>18 Establish pedestrian connection to London Park lookout point.</p> <p>19 Reinforce connections to, and improve amenity of, the Castlecliff shops.</p> <p>20 New buildings north of Victory Shed establish a water's edge destination for community/cultural /retail and F+B activity. Flexible central 'street' space for community events and markets.</p> <p>21 Additional public/boat trailer parking.</p> <p>22 New park with river/dune ecology. Viewing opportunity from . (Final design of park TBC via</p> | <p>23 further community consultation)</p> <p>24 Public access to Training Wall walkway. Opportunity for recreational fishing and viewing.</p> <p>25 Flexible lawn zone for community events and recreation.</p> <p>26 New recreational (non-motorised vessels) boat ramp. Potential amenities/community/cultural building.</p> <p>27 Staging area for potential ferry service operated from Wharf 1.</p> <p>28 Potential use of Victory Shed for interim marine usage and boat storage in secure yard.</p> | <p>29 Marine/Fishing/Dolomite storage.</p> <p>30 Future Marine precinct expansion.</p> <p>31 Wharf 1 retained for large boat berthing. Potential location of ferry service.</p> <p>32 Potential Port - City Centre Ferry service berth and potential wharf extension (120m)</p> <p>33 New Jump/Dive Platform in Port Basin</p> <p>34 Future Industrial/Commercial Development/ consolidation with access from Heads Road</p> <p>35 Training wall extension to attenuate wave action (final location/extent TBC)</p> |
|--|---|---|--|--|--|



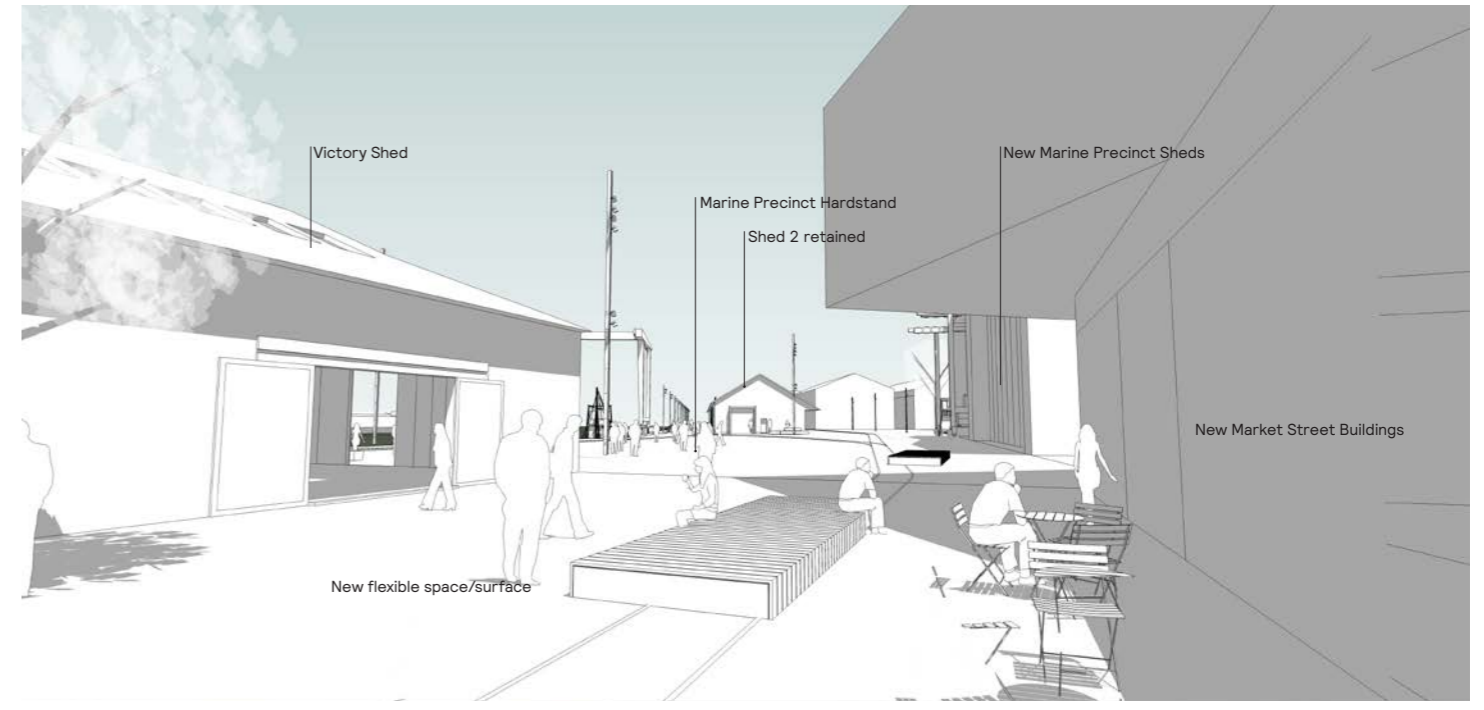
View 001_ Looking north-west along the existing wharves showing public access and occupation of and around the Victory Shed



View 002_ Looking south-west towards the proposed Marine Industry precinct with adjacent wharf activity and public occupation



View 003_ Looking north-west from proposed new park across the re-established Port Basin



View 004_ Looking north-west from proposed Market Street to Shed 2 and Marine Precinct hardstand